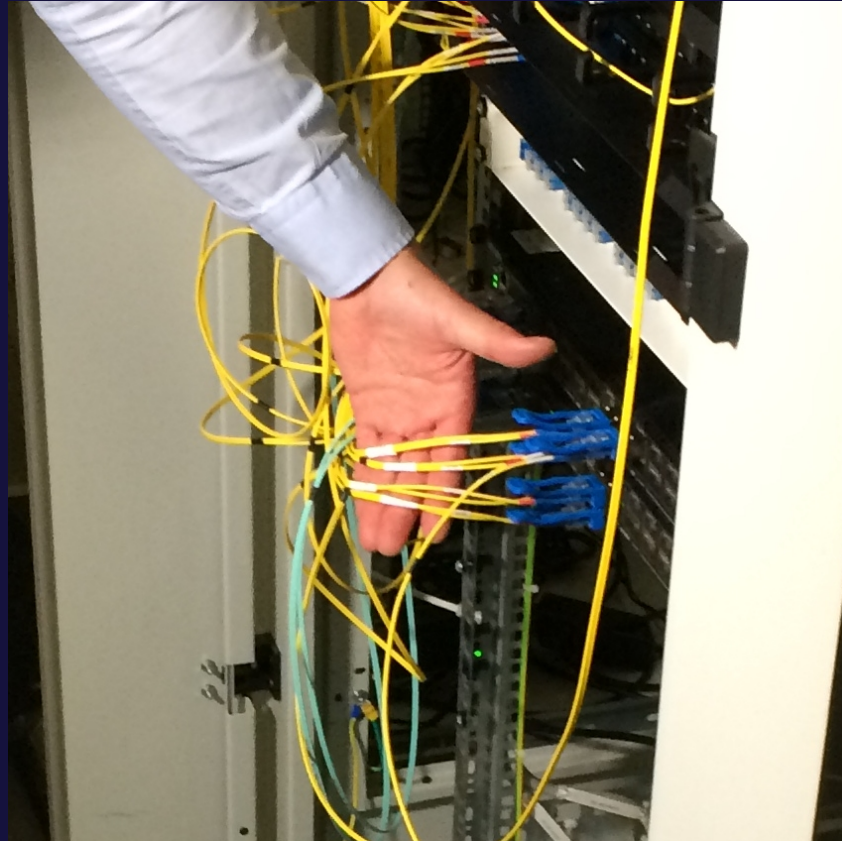


# SIMPLIFY & REDUCE CABLING

The fibers held in this man's hand are the two main and two redundant paths for TV 2's (Norway) production signals used, for example, for the broadcaster's coverage of English Premier League Soccer. In a typical production, each fiber carries around 100 video and audio signals



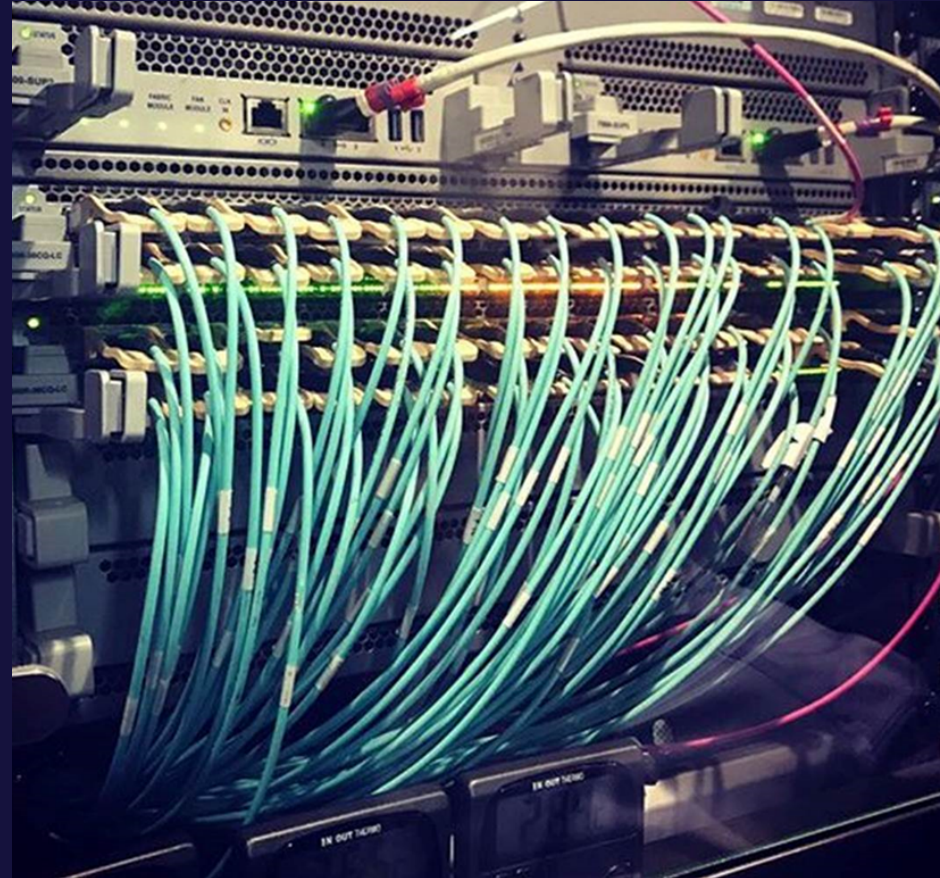
# SIMPLIFY & REDUCE CABLING



These fibers with 10/40G transceivers carry 100% of the signals necessary to support one 32 camera UHD OB truck, with twelve replay servers and multi-viewing for almost 500 unique sources

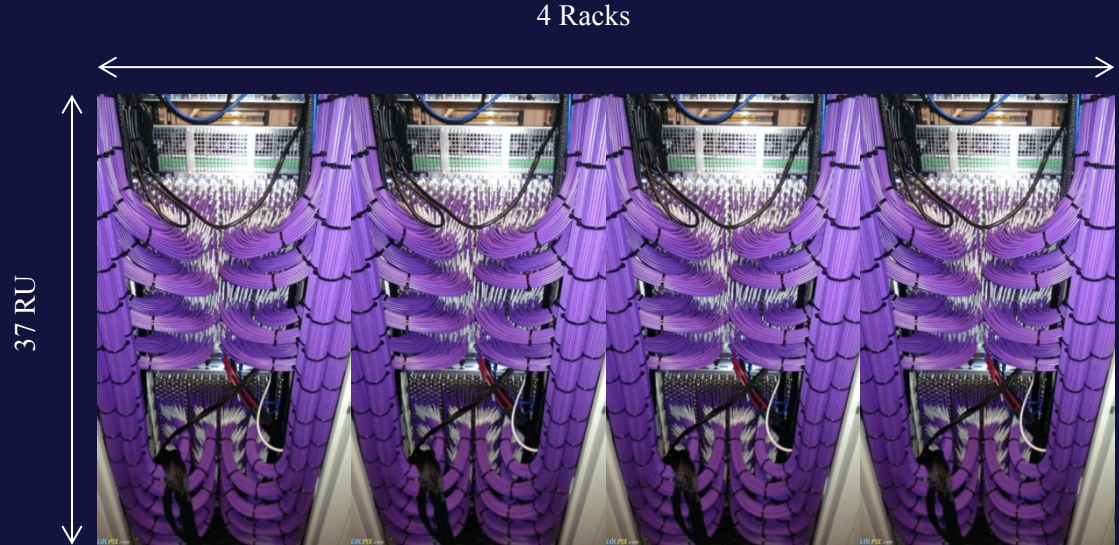
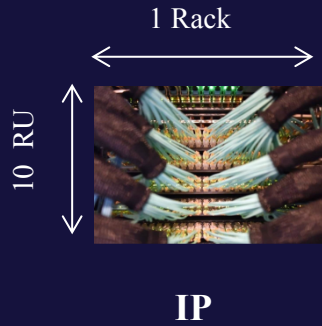
# SIMPLIFY & REDUCE CABLING

These fibers with 25/100G transceivers carry 100% of the signals necessary to support one 32 camera UHD OB truck, with twelve replay servers and multi-viewing for 250 unique sources



# SIMPLIFY & REDUCE CABLING

## COMPARISON: UHD OB Truck



Equivalent amount of **3G SDI** cabling required